

Fulflo® MP Filter Vessels

Multi-Cartridge Filter Vessel Series

Fulflo® MP (Membrane Protectors) Filter Vessels Protect Membranes by Prefiltering R.O. Feed Water

MP Filter Vessels are ideal for a wide range of filtration applications including prefiltration of brackish, process and sea water. All MP vessels have dual purpose bottom seats for use with either double-open-end or 222 O-ring design.

PED compliance consult Parker

Applications

- Brackish and Sea Water
- Semiconductor Process Water
- Boiler Feed Water
- Reverse Osmosis Prefiltration
- Potable Water
- Electronic Rinse Water
- Deionized Water



Features and Benefits

- Flow rates from 409 l/min to 13,300 l/min.
- Pressure ratings from 100 psi (6.9 bars) to 150 psi (10.3 bars).
- 304L or 316L stainless steel.
- Stainless steel welded attachments.
- Swing bolt closure for quick opening, with hex nuts for use with pneumatic tools.
- Optional stainless steel bolting and davit assembly.
- Horizontal vessels provide for easy cartridge installation.
- Glassbead blasted exteriors.
- Passivated interior and exterior surfaces to remove free carbon and protect against corrosion.
- Buna-N O-ring closure seal provides positive cover sealing.
- Horizontal vessel utilizes removable internal cartridge alignment plate.
- Large same size clean and dirty drain for uniform piping and valve size.

Process Filtration Division

WARNING! FAILURE OR IMPROPER SELECTION OR IMPROPER USE OF THE PRODUCTS AND/OR SYSTEMS DESCRIBED HEREIN OR RELATED ITEMS CAN CAUSE DEATH, PERSONAL INJURY AND PROPERTY DAMAGE. This document and other information from Parker Hannifin Corporation, its subsidiaries and authorised distributors provide product and/or system options for further investigation by users having technical expertise. It is important that you analyse all aspects of your application and review the information concerning the product or system in the current product catalogue. Due to the variety of operating conditions and applications for these products or systems, the user, through its own analysis and testing, is solely responsible for making the final selection for the products and systems and assuring that all performance, safety and warning requirements of the application are met. The products described herein, including without limitation, product features, specifications, designs, availability and pricing, are subject to change by Parker Hannifin Corporation and its subsidiaries at any time without notice.



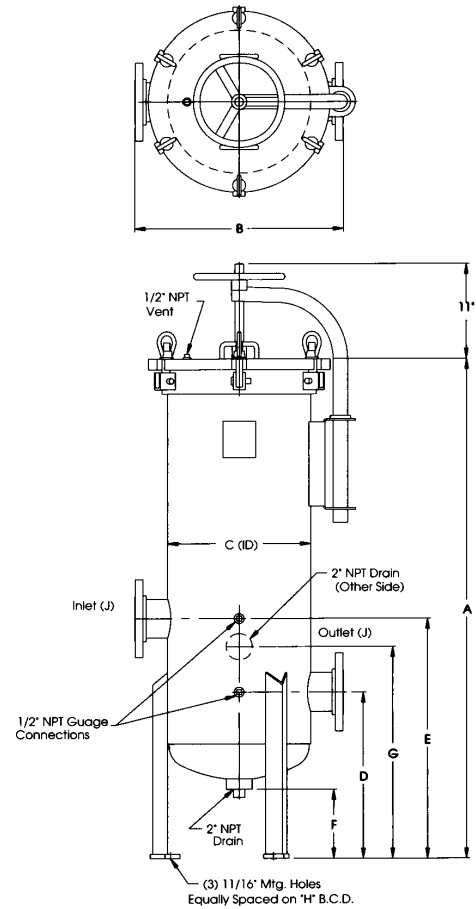
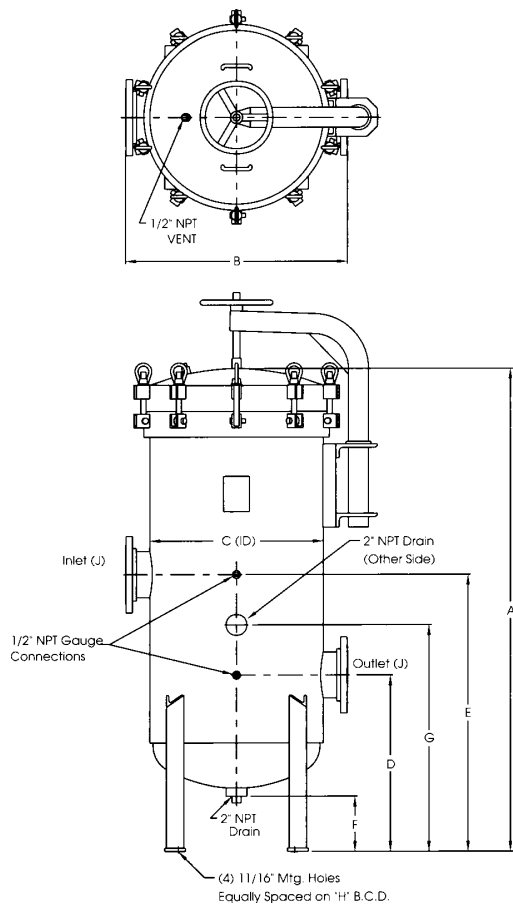
Multi-Cartridge Filter Vessel Series

■ Fulflo® MP Filter Vessels Throughput

Based on flow of water (in l/min)

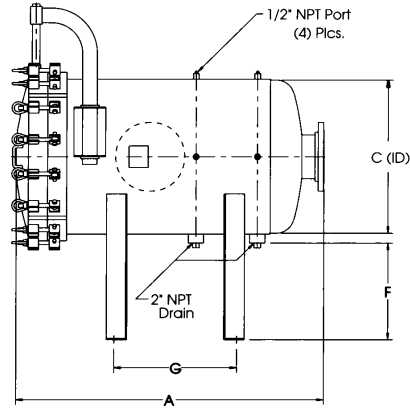
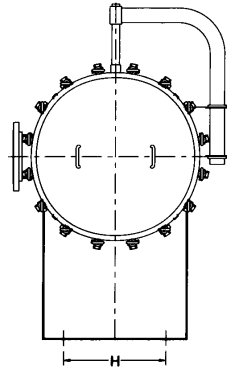
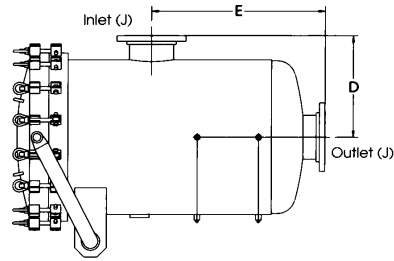
10 in Cartridges	Filter Model	At 11 l/min** per 254mm (l/min)	At 13 l/min per 254mm (l/min)	At 15 l/min per 254mm (l/min)	At 17 l/min per 254mm (l/min)	At 19 l/min per 254mm (l/min)
Vertical Vessels						
36	MP12-3-3FK1	396	468	540	612	684
48	MP12-4-4FK1	528	624	720	816	912
63	MP21-3-4FK1	693	819	945	1071	1197
84	MP21-4-4FK1	924	1092	1260	1428	1596
87	MP29-3-4FK1	957	1131	1305	1479	1653
105	MP35-3-6FK1	1155	1365	1575	1785	1995
116	MP29-4-6FK1	1276	1508	1740	1972	2204
120	MP40-3-6FK1	1320	1560	1800	2040	2280
140	MP35-4-6FK1	1540	1820	2100	2380	2660
156	MP52-3-6FK1	1716	2028	2340	2652	2964
160	MP40-4-6FK1	1760	2080	2400	2720	3040
208	MP52-4-8FK1	2288	2704	3120	3536	3952
258	MP86-3-8FK1	2838	3354	3870	4386	4902
309	MP103-3-8FK1	3399	4017	4635	5253	5871
344	MP86-4-10FK1	3784	4472	5160	5848	6536
412	MP103-4-10FK1	4532	5356	6180	7004	7828
472	MP118-4-12FK1	5192	6136	7080	8024	8968
704	MP176-4-14FK1	7744	9152	10560	11968	13376
Horizontal Vessels						
120	MP40H-3-6FK1	1320	1560	1800	2040	2280
156	MP52H-3-6FK1	1716	2028	2340	2652	2964
160	MP40H-4-6FK1	1760	2080	2400	2720	3040
208	MP52H-4-8FK1	2288	2740	3120	3536	3952
258	MP86H-3-8FK1	2838	3354	3870	4386	4902
309	MP103H-3-8FK1	3399	4017	4635	5253	5871
344	MP86H-4-10FK1	3784	4472	5160	5848	6536
412	MP103H-4-10FK1	4532	5356	6180	7004	7828
472	MP118H-4-12 FK1	5192	6136	7080	8024	8968
704	MP176H-4-14FK1	7744	9152	10560	11968	13376

** Actual flow rate is dependent on fluid viscosity, micron rating, contaminant and media type. Consult flow charts for each application.



Design Specifications

Model*	No. & Length of Cartridges mm	Dimensions										Shipping Weight Kg
		A mm	B mm	C mm	D mm	E mm	F mm	G mm	H mm	J	K	
MP12-3-3FK1	(12) 762	1720	508	325	470	686	203	603	318	3 NPS	3	177
MP12-4-4FK1	(12) 1106	1975	508	325	470	686	203	603	318	4 NPS	3	191
MP21-3-4FK1	(21) 762	1746	610	408	489	705	203	622	400	4 NPS	3	268
MP21-4-4FK1	(21) 1106	2000	610	408	489	705	203	622	400	4 NPS	3	241
MP29-3-4FK1	(29) 762	1924	660	459	559	845	203	718	454	4 NPS	3	259
MP29-4-6FK1	(29) 1106	2178	660	459	559	845	203	718	454	6 NPS	3	282
MP35-3-6FK1	(35) 762	1930	711	510	572	864	203	730	505	6 NPS	3	295
MP35-4-6FK1	(35) 1106	2184	711	510	572	864	203	730	505	6 NPS	3	309
MP40-3-6FK1	(40) 762	1956	762	560	584	830	203	742	556	6 NPS	4	323
MP40-4-6FK1	(40) 1106	2210	762	560	584	830	203	742	556	6 NPS	4	341
MP52-3-6FK1	(52) 762	2051	813	611	648	1016	203	832	603	6 NPS	4	359
MP52-4-8FK1	(52) 1106	2305	813	611	648	1016	203	832	603	8 NPS	4	391
MP86-3-8FK2	(86) 762	2203	1016	763	737	1181	203	959	762	8 NPS	4	582
MP86-4-10FK2	(86) 1106	2457	1016	763	737	1181	203	959	762	10 NPS	4	627
MP103-3-8FK2	(103) 762	2228	1067	814	749	1194	203	972	813	8 NPS	4	641
MP103-4-10FK2	(103) 1106	2483	1067	814	749	1194	203	972	813	10 NPS	4	686
MP118-4-12FK2	(118) 1106	2610	1168	916	826	1327	203	1073	911	12 NPS	4	832
MP176-4-14FK2	(176) 1106	2737	1372	1068	889	1454	203	1156	1067	14 NPS	4	1205



Design Specifications

Model*	Elements (mm)	Dimensions									Shipping Weight (Kg)
		A (mm)	B (mm)	C (mm)	D (mm)	E (mm)	F (mm)	G (mm)	H (mm)	J	
MP40H-3-6FKI	(40) 762	1410	1570	560	380	810	580	580	300	6 NPS	386
MP40H-4-6FKI	(40) 1016	1660	1570	560	380	910	580	810	300	6 NPS	400
MP52H-3-6FKI	(52) 762	1400	1600	610	410	810	560	580	360	6 NPS	418
MP52H-4-8FKI	(52) 1016	1660	1600	610	410	910	560	810	360	8 NPS	450
MP86H-3-8FKI	(86) 762	1530	1680	760	510	860	480	610	510	8 NPS	677
MP86H-4-10FKI	(86) 1016	1530	1680	760	510	960	480	810	510	10 NPS	709
MP103H-3-8FKI	(103) 762	1540	1700	810	530	860	460	610	560	8 NPS	736
MP103H-4-10FKI	(103) 1016	1750	1700	810	530	960	460	810	560	10 NPS	773
MP118H-4-12FKI	(118) 1016	1830	1750	920	580	1020	410	810	660	12 NPS	927
MP176H-4-14FKI	(176) 1016	1900	1830	1070	690	1040	330	810	810	14 NPS	1282

* Models with three mounting legs (MP12-MP35) will have leg oriented directly below inlet nozzle.

Ordering Information

4 | **MP** | **40** | **3** | **6F** | **K1**
 Material | Design Series | Number of Columns | Cartridge Length (x 254mm) | Inlet/Outlet | Coverlift

4L = 304L SS
6L = 316L SS

MP = Vertical Series (12-176 Columns)
MPXXH = Horizontal Series (40-176 Columns)

F = Flange

No Symbol = None
K1 = Mechanical
K2 = Hydraulic

Process Filtration Division

Parker Filtration
 Filter Division Europe
 Shaw Cross Business Park
 Dewsbury, West Yorkshire
 WF12 7RD, England
 Phone: +44 (0) 1924 487000
 Fax: +44 (0) 1924 487001
 Website: www.parker.com

